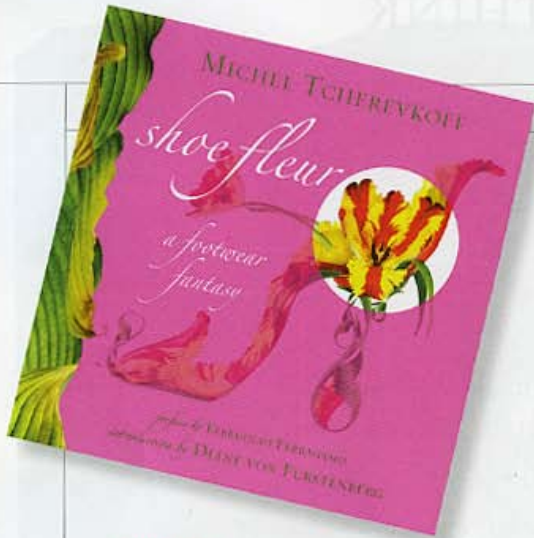




WHAT'S NEW



Shoe Shine

Photographer and artist Michel Tcherevkoff's *Shoe Fleur: A Footwear Fantasy* (Welcome Books) showcases botanical shoes and accessories that he crafted from photographs of a single plant or flower. Each design has a whimsical inspiration, such as the "Palm Birch" backpack. \$35, www.amazon.com —J.S.

Scent Sharing

Indulge yourself or someone special with Jo Malone's suite of 10 candles presented in an elegant leather jewel box complete with matches and a silver-plated candle snuffer. \$575, *Sale Fifth Ave, The Gardens Mall, 3101 PGA Blvd, Palm Beach Gardens, (561) 694-9009.* —L.K.



Cattle Call

Make a bold design statement with the Gaucho Mirror, inspired by the late architect Morris Lapidus, whose work is often credited as defining 1950s "Miami Beach." Available to the trade, *J. Nelson, at the Design Center of the Americas (DCOTA), 1855 Griffin Rd, Dana Point, (949) 929-8880 or www.wafgroup.com.* —J.S.



Steady Footing

Now available at ABC Carpet & Home, Madeline Weinrib's extensive rug collection features bright colors, contemporary designs and natural materials, making them a great fit for beachy Palm Beach interiors. *Mums (left), Riva, prices vary, 777 S. Congress Ave, Delray Beach, (561) 279-7777, www.abc.com.* —J.S.



ing curves,
Aria collection
and is based on a
CityPlace,
(561) 514-0400,

PALM BEACH COTTAGES & GARDENS
www.pbcg.com | December 2007/January 2008

TIMELESS LUXURY
 Cavellino Time | Seasonal Sensations | Fashion at Home

APP MANN

PUBLICATION: Palm Beach Cottages & Gardens
DATE: January 2008
Gaucho Mirror by Morris Lapidus